



United Methodist
Community House

GROWING STRONGER *together*

2025 Community Impact Report



Dear Friends,

This past year at United Methodist Community House marked a defining chapter in our more than 120-year history of serving this community. It was a year of meaningful growth, made possible because of the shared commitment of families, older adults, volunteers, staff, and **supporters like you** who believe in what UMCH stands for.

Together, we opened the doors to our new Older Adult Center at 900 S. Division—a vibrant, welcoming space where adults aged 60+ can gather, stay active, access resources, and build meaningful connections. From the new café and fitness lab to expanded outreach office and community spaces, this center is already strengthening lives and deepening relationships across generations.

We also expanded our reach with children and youth in powerful ways. **Our 21st Century after school program grew from 5 to 8 sites at Grand Rapids Public Schools across the city**, creating more safe, enriching spaces for students to learn and grow. At the same time, **we increased capacity to serve more children in our Early Childhood Education programs**, welcoming more infants and young children into high-quality early learning environments at a time when access remains critically limited in our community.

The progress we've made reflects the grit of a community coming together with shared purpose, determined to invest in its future. It reflects older adults who show up each day committed to staying active and connected. It reflects families working hard to build stable foundations for their children. **And it reflects supporters like you, whose generosity and trust have helped transform vision into reality.**

As we look ahead, we do so with momentum and confidence. Much has been accomplished, and important work remains to fully realize our planned campus expansion and the opportunities it will create for generations to come. We are energized by what we've built together and our shared accomplishments still to come.

Thank you for the important role you play in the UMCH mission and for being an essential part of a community where every generation can belong.

With deep appreciation,



Carla Moore
CEO, United Methodist Community House



YOUR 2025 IMPACT *at a glance*



INFANTS & YOUNG CHILDREN
Early Childhood Education

104

children served

2,240

hours of care

28,965

meals provided

100 %

of children improved developmental milestones

90 %

on track for kindergarten readiness



YOUTH

After-school engagement and support; summer day camp

8

21st Century sites at Grand Rapids Public Schools

400

students served

360

hours of summer programming per student



OLDER ADULTS

Outreach and assistance, transportation, meals, health and wellness

102

individuals served

6,196

rides provided

8,172

meals provided

617

outreach & assistance hours

1,225

hours of engagement per participant



FRESH MARKET

Supports local families with fresh, healthy, affordable foods

\$51,125

annual sales

431

local members

Local Food Partners

NEW CITY NEIGHBORS

REVOLUTION FARMS

GREEN WAGON

**Looking for financials? Find our latest audited financial statements on our website at umchousegr.org/reports*

GROWING STRONGER...

...at the Child Development Center

When Kelsey first enrolled her children in UMCH's Child Development Center, she was navigating one of the most difficult seasons of her family's life—facing homelessness after a house fire.

Through Early Head Start and the Great Start Readiness Program at UMCH, she was paired with a parent advocate who connected her with vital community resources to help the family begin moving forward.

“From the very beginning, we felt supported,” she recalls. “I was not left to figure things out alone.”

But the support extended beyond stability during a crisis. Relationships with teachers, family game nights, shared meals, and small celebrations brought much-needed connection during a season that could have been as isolating as it was overwhelming.

“To thrive as a parent, you truly need a village behind you,” she reflects.

“When I felt like I had lost mine, UMCH became that village for us.”

Today, her family's circumstances look very different. “Fast forward to 2026—our family has moved from an apartment into our own home,” she shares.

Throughout every step of the journey, UMCH remained a steady presence. From consistent communication to nutritious meals, from thoughtful notes to daily encouragement, Kelsey says staff made sure she and her children had what they needed to succeed.

“I am beyond grateful for the care, compassion, and dedication shown to my family,” she says. “This program did not just prepare my children for school—it helped prepare us for a stronger future.”



...at the Older Adult Center

For years, older adults at UMCH gathered in a space that was never designed to be a senior center. It was a dining room—a place to share meals and conversation—but not a space built to support physical wellness, mobility, or expanded programming.

In 2025, that all changed.

The new Older Adult Center at 900 S. Division hosts a dedicated fitness lab, group exercise space, café, and welcoming community areas, all designed to support connection, independence, and movement.

And that movement is making a difference.



“I used to take pain relievers four times a day for my arthritis. Now I don’t take those pills anymore. I come four times a week to stretch and exercise—and I feel stronger.” -Penda

“I joined the exercise classes to strengthen my back. My blood pressure has improved, and with my doctor’s approval, I’m no longer in physical therapy.” -Shirley

“My range of motion is better, and my pain level has improved. I stretch every day and feel relief in my hips and arms.” -Dee

“I come almost every day to work on my balance and strength. My goal is to stand up from a chair without using my arms, and eventually to walk without my cane.” -Harry

“I’ve been working on strength and stability to improve my ongoing knee issues. I’m lifting heavier weights now, and I feel healthier overall.” -Connie

The new center hasn’t only expanded programming for older adults—it’s **expanded possibilities**. What was once simply a place to sit has become a place to move, to build confidence, and to reclaim independence.

BUILDING BELONGING

Campus Expansion Update

Thanks to early leadership gifts and generous community support, many essential elements of UMCH’s campus expansion (listed below) are already complete. These spaces are not just built—they are already active, welcoming, and serving our community *today*.

To realize the full vision for the expanded campus, we are actively securing philanthropic support to complete several key spaces, including 4 new infant classrooms, intergenerational program spaces, and a public outdoor sports court and green space.

OLDER ADULT CENTER 900 S. Division

The Older Adult Center is open and operating:

- New café with state-of-the-art kitchen
- Fitness lab & treatment room
- Game lounge
- Social/library lounge
- Digital lounge & computer lab
- Outreach & Assistance office
- Conference rooms & administrative offices

CHILD DEVELOPMENT CENTER 904 Sheldon SE

New spaces in the Child Development Center:

- Intergenerational park & playground
- Dedicated toddler wing with restrooms
- New drop-in and second-shift care space
- Updated preschool classrooms
- Improved meal-prep kitchen
- Indoor gross-motor play space
- Outdoor classroom

CAMPAIGN PROGRESS

Total Goal
\$6.9 MILLION

Raised to Date
\$6.15 MILLION

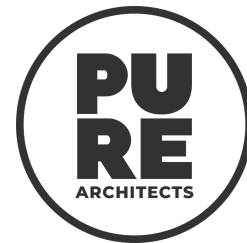
Still Needed
\$750K



YOUR GENEROSITY

helps our community grow stronger

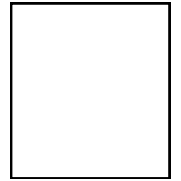
Thank you to these corporate and community sponsors for making UMCH's 2025 signature events and activities possible, including Senior Prom, Family Field Day, and Summer Adventure Club!



**UNITED METHODIST
COMMUNITY HOUSE
STRENGTHENS OUR
COMMUNITY ACROSS
GENERATIONS THROUGH
LIFE-CHANGING PROGRAMS
AND SERVICES.**



United Methodist
Community House
904 Sheldon Ave SE
Grand Rapids, MI 49507



2025 BOARD OF DIRECTORS

OFFICERS

Jonathan Siebers,
President

Lisa Cruden,
Vice President

Kevin Schrock,
Treasurer

Tara Bivens,
Secretary

MEMBERS

Melissa Chavez

Benjamin Cochran

Yvonne Cones

Megan Erskine

Verah Narh Kamara

Amy Turner-Thole

Kevin Vazquez

Virginia Walton

Julia Paradine-Rice,
Ex-Officio Member

Sharon Smith,
Ex-Officio Member

616.452.3226
umchousegr.org